



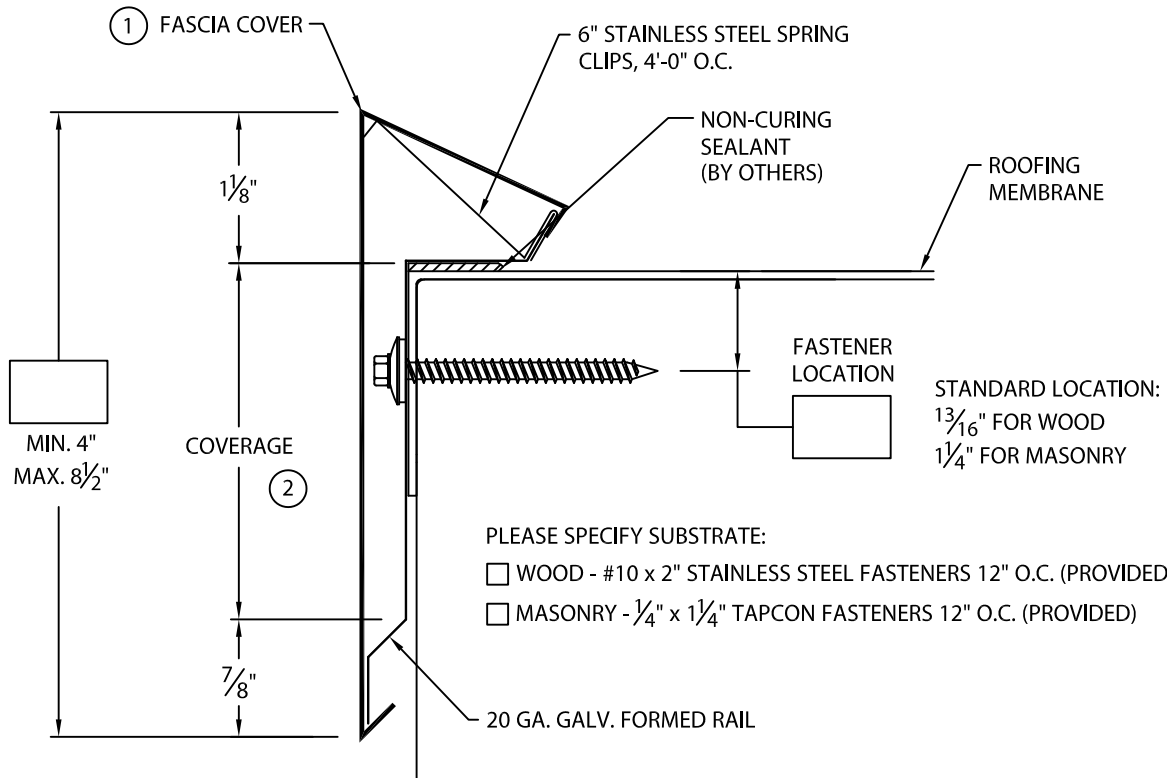
CUSTOM ONE EDGE

FULLY ADHERED OR MECHANICALLY ATTACHED SINGLE-PLY VERSION

CUSTOM FACE SIZE, FASTENER LOCATION AND COVER LENGTHS - .050" AND .063" COVER MATERIAL

ANSI/SPRI ES-1 DESIGN PRESSURE OF 155 psf

U.S. Patent # 5,927,023



NOTES:

- ① FASCIA COVER PROVIDED WITH $3\frac{1}{2}$ " SPLICE PLATES.
- ② TYPICALLY COVERAGE SHOULD EXTEND A MIN. OF 1" BELOW WOOD BLOCKING IF APPLICABLE.

Fabrication will proceed only after receipt of signed print approval.

Print Approval:

Architect and/or contractor shall verify all dimensions, sizes and quantities. All products to be installed in strict accordance with Metal-Era's printed instructions.

Approved by: _____

Date: _____

MATERIAL:

____ .050" Aluminum
____ .063" Aluminum
____ Other _____

Color: _____

Finish: _____

QUANTITIES:

____ Lineal Feet @ _____ Lengths

OR

____ Pcs. @ _____ Lengths

____ Outside Miters (Cover Only) @ 90°

____ Inside Miters (Cover Only) @ 90°

For Non-90° Miters, See Print Approval #11010-1103

PROJECT:

ARCHITECT:

ROOFING CONTRACTOR:

REPRESENTATIVE/DISTRIBUTOR:

Corporate Offices, Manufacturing
1600 Airport Road; Waukesha, WI 53188
Phone: 800-558-2162
Fax: 800-373-9156
www.metalera.com



DATE: 02/02/18

DRN BY: JJC

CKD BY: SAK

SHT.# ____ OF ____

DWG# 24310-19870

E