



PERMA-TITE GOLD QUICKLOCK RADIUS COPING

EXISTING SLOPE WITH NAILER VERSION

IMPORTANT!!! MUST INDICATE PROPER RADIUS CONDITION BY CIRCLING APPROPRIATE OUTSIDE FACE

PROVIDING A RADIUS
THE RADIUS MAY BE PROVIDED
IN ONE OF TWO METHODS:

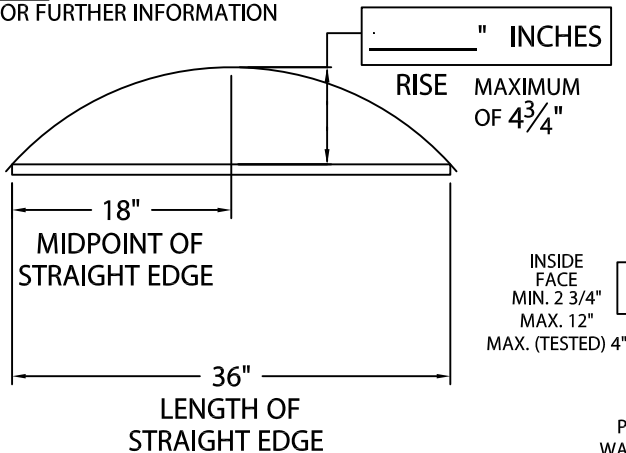
1.) THE ACTUAL KNOWN RADIUS IS

_____ ' FEET _____ " INCHES

OR

2.) FIELD CONDITION MEASUREMENTS

NOTE: REFER TO ATTACHED WORKSHEET
FOR FURTHER INFORMATION



NOTE: CHECK MEASUREMENTS ALONG ENTIRE RADIUS.

DETAIL A

MINIMUM
OF 3'-0"

RISE

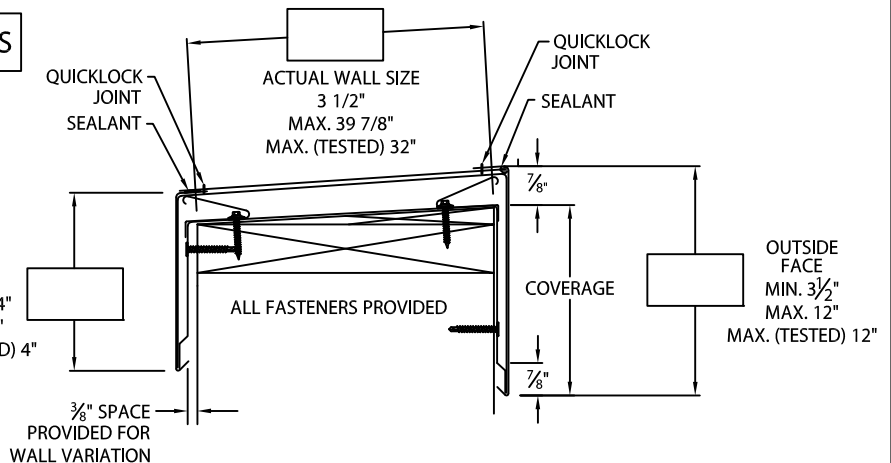
SUBSTRATE CONDITION

OUTSIDE
FACE

OUTSIDE
FACE

RADIUS
(PROVIDED BY APPROVER
PER DETAIL A)

TOP
VIEW



NOTES: – CONCEALED SPLICE PLATES ARE PROVIDED WITH FACTORY
APPLIED DUAL NON-CURING SEALANT STRIPS.

– FABRICATION OF RADIUS IS FURNISHED UTILIZING A NON-PENETRATING
QUICKLOCK JOINT, THEN FACTORY SEALED WATERTIGHT.

Fabrication will proceed only after receipt of
signed print approval.

Print Approval:

Architect and/or contractor shall verify all
dimensions, sizes and quantities. All
products to be installed in strict accordance
with Metal-Era's printed instructions.

Approved by: _____

Date: _____

MATERIAL:

___ 24 GA. GALV. STEEL

___ .040" ALUMINUM

___ .050" ALUMINUM

___ .063" ALUMINUM

___ OTHER _____

COLOR: _____

FINISH: _____

QUANTITIES:

_____ LINEAL FEET 4'-0" LENGTHS

PROJECT:

ARCHITECT:

ROOFING CONTRACTOR:

REPRESENTATIVE/DISTRIBUTOR:

Corporate Offices, Manufacturing
1600 Airport Road; Waukesha, WI 53188
Phone: 800-558-2162
Fax: 800-373-9156
www.metalera.com



DATE: 06/27/22

DRN BY: MLM

CKD BY: MM

SHT.# ____ OF ____

DWG# 11011-38815

A